

A vertical illustration on the left side of the slide depicts a cityscape. It features a mix of architectural styles, including modern glass skyscrapers and traditional European-style buildings with colorful facades and gabled roofs. The scene is set against a light blue sky with soft, wispy clouds. The illustration is oriented vertically, running from the top to the bottom of the page.

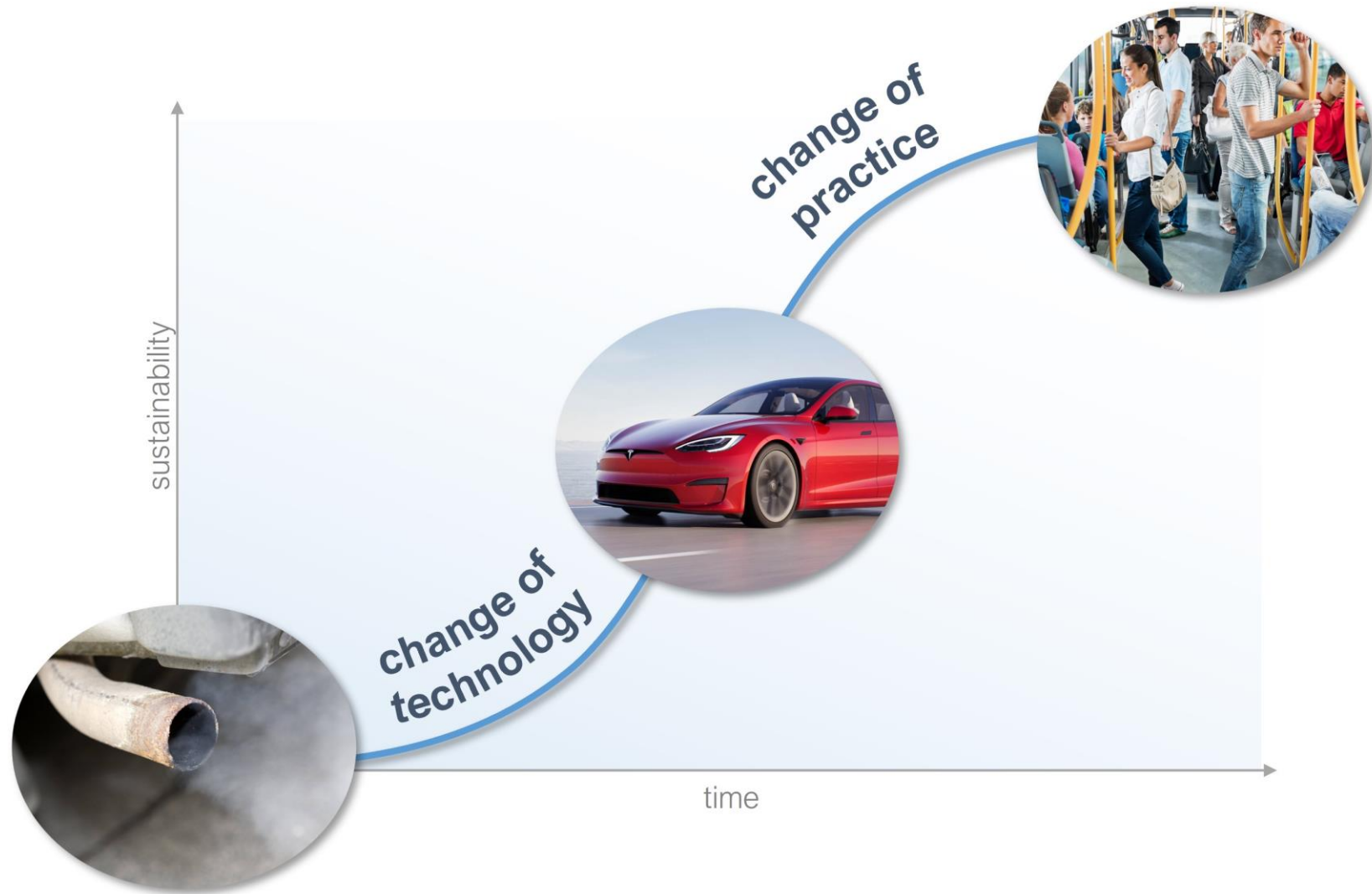
Enabling local initiatives for ecosocial transformation

Johannes SUITNER
Institute of Spatial Planning, TU Wien



THE RESEARCH BEHIND IT

A societal change perspective on transformations



Adapted from Geels (2019)

Spotlight on local socially innovative interventions



Social innovation or “New ways of doing things”

- ☞ A multi-stage, iterative innovation process
- ☞ Motivated by concrete social needs
- ☞ Aimed at changing social configurations
(*practices, interactions, societal roles, resource access, ...*)
 - ✦ Developing new business models | *citizen power plants*
 - ✦ Establishing new decision-making mechanisms | *citizen juries*
 - ✦ Changing societal roles | *farmers as energy prosumers*
 - ✦ Changing everyday practices | *switching to sustainable modes of transport*

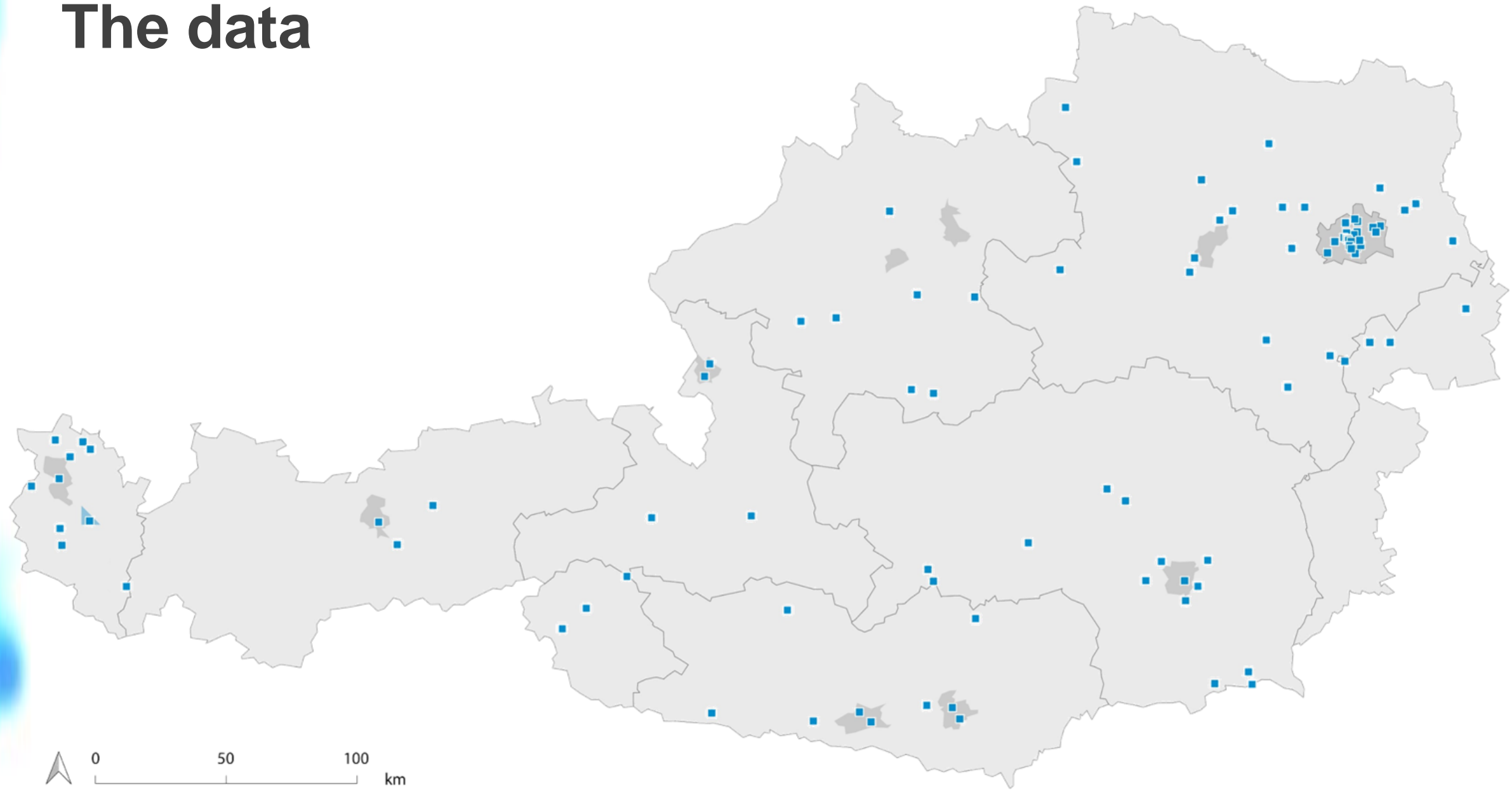
Moulaert, F., & MacCallum, D. (2019). *Advanced introduction to social innovation*. Edward Elgar Publishing.

Pel, B., Haxeltine, A., Avelino, F., Dumitru, A., Kemp, R., Bauler, T., ... & Jørgensen, M. S. (2020). *Towards a theory of transformative social innovation: A relational*

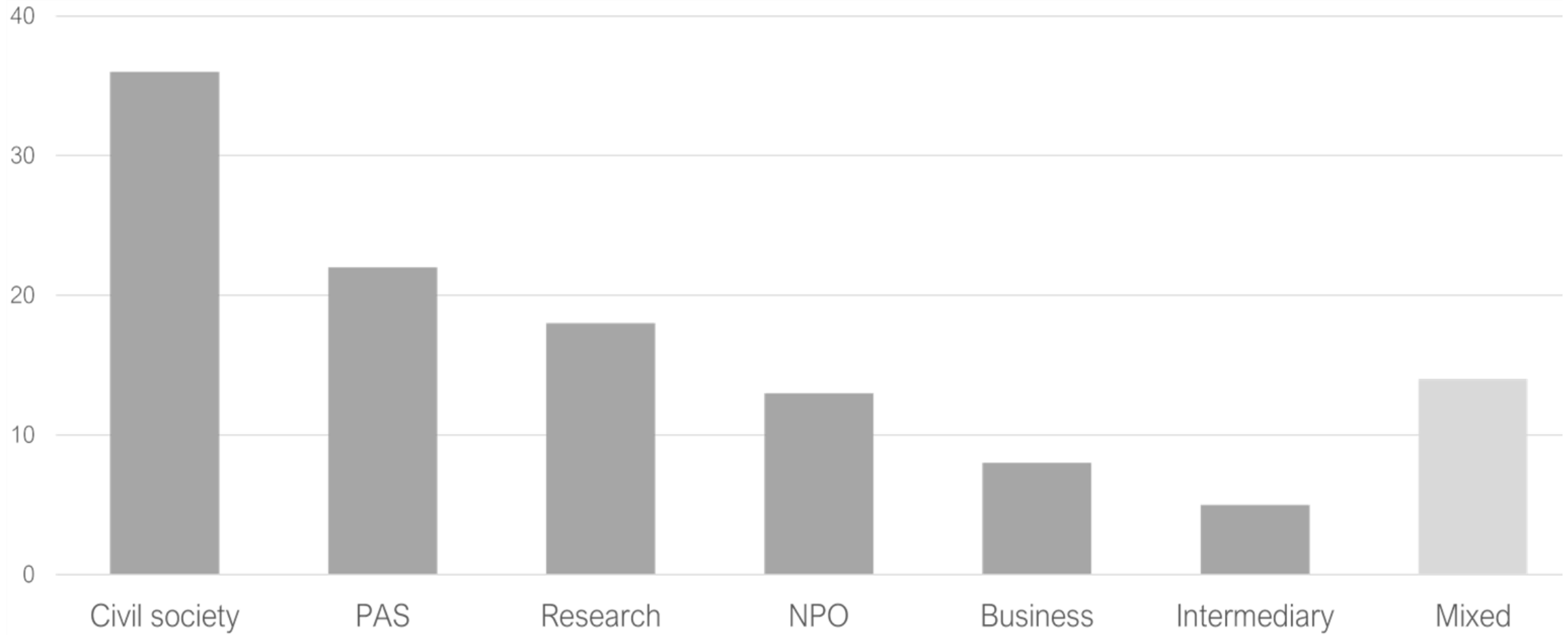
framework and 12 propositions. *Research Policy*, 49(8), 104080.

Suitner, J., Haider, W., & Philipp, S. (2023). *Social innovation for regional energy transition? An agency perspective on transformative change in non-core regions*. *Regional Studies*, 57(8), 1498-1510.

The data



Key initiators



Key facilitating factors

✦ **Initiators' capacities**

(expertise, experiential knowledge, networks)

✦ **Exchange between initiatives**

(mutual learning, inspiration, collaboration)

✦ **Knowledge of place**

(development path, identity, future vision)

✦ **Institutional support**

(financial, administrative and scientific)



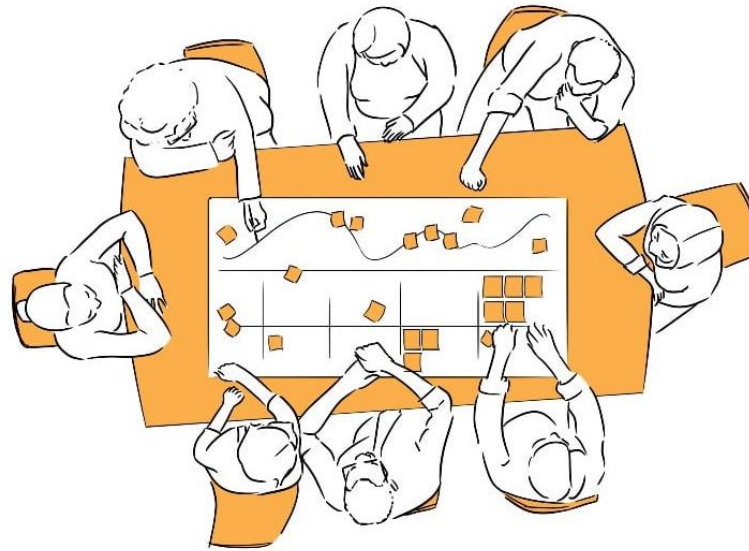
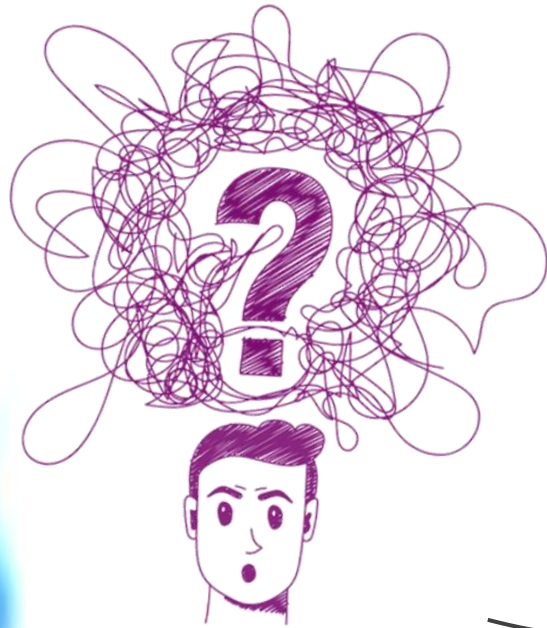
INSTITUTIONALIZING SUPPORT FOR LOCAL SI

Supporting local initiatives during ...

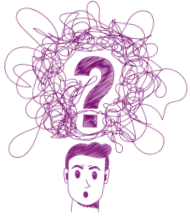
IDEATION

IMPLEMENTATION

**IMPACT
CREATION**



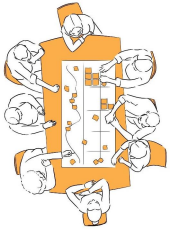
What matters



Share experience *on success and failure „in context“*

Provide administrative support *(funding schemes, legal issues, ...)*

Enable connections *with experts and similar initiatives*



Provide a dedicated contact person *for simple communication & trust*

Be flexible *(allow for change along the way)*

Recognize commitment *(media coverage, prizes, ...)*



Document learnings *(make them accessible and usable for others)*

Multiply, *amplify, and institutionalize successful interventions*

Don't innovative for the sake of newness *(continue schemes that work)*

Towards intermediaries for SI

Knowledge brokers

- Experts integrating system knowledge (*climate, governance, ...*),
- experiential knowledge (*what worked where, when, why, and how*),
- local knowledge (*contextual literacy; who are we and what works here?*)

Networking hubs

- Exchange platform (*learning from experience*)
- Matchmaking platform (*who could I collaborate with?*)

Vertical integrators and communicators

- Top-down: Translating strategies, agendas, funding schemes and windows of opportunity to local changemakers
- Bottom-up: Communication learnings for institutionalization

How to ...

Build on existing intermediaries and multipliers

Expand their scope and competencies

→ Regional management agencies

→ LEADER managers

→ Austria: KEM regions (small-scale regional collaborations of typically 5-20 municipalities, aimed at climate- and energy-oriented interventions, funded by Austrian government)



Thank You!

Johannes SUITNER | johannes.suitner@tuwien.ac.at | LinkedIn:

